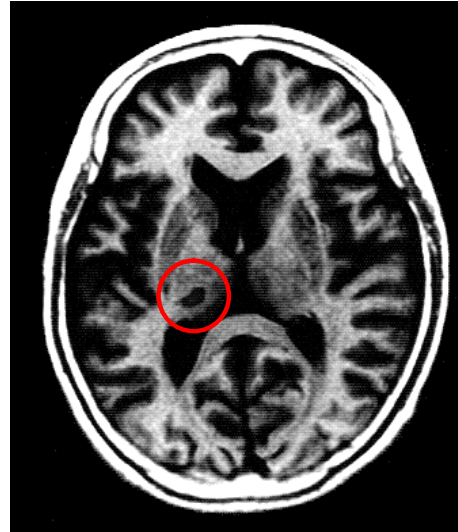


MRI Scan of Stroke Patient

MRI Scan of Stroke Patient (Case 1)



Before Treatment



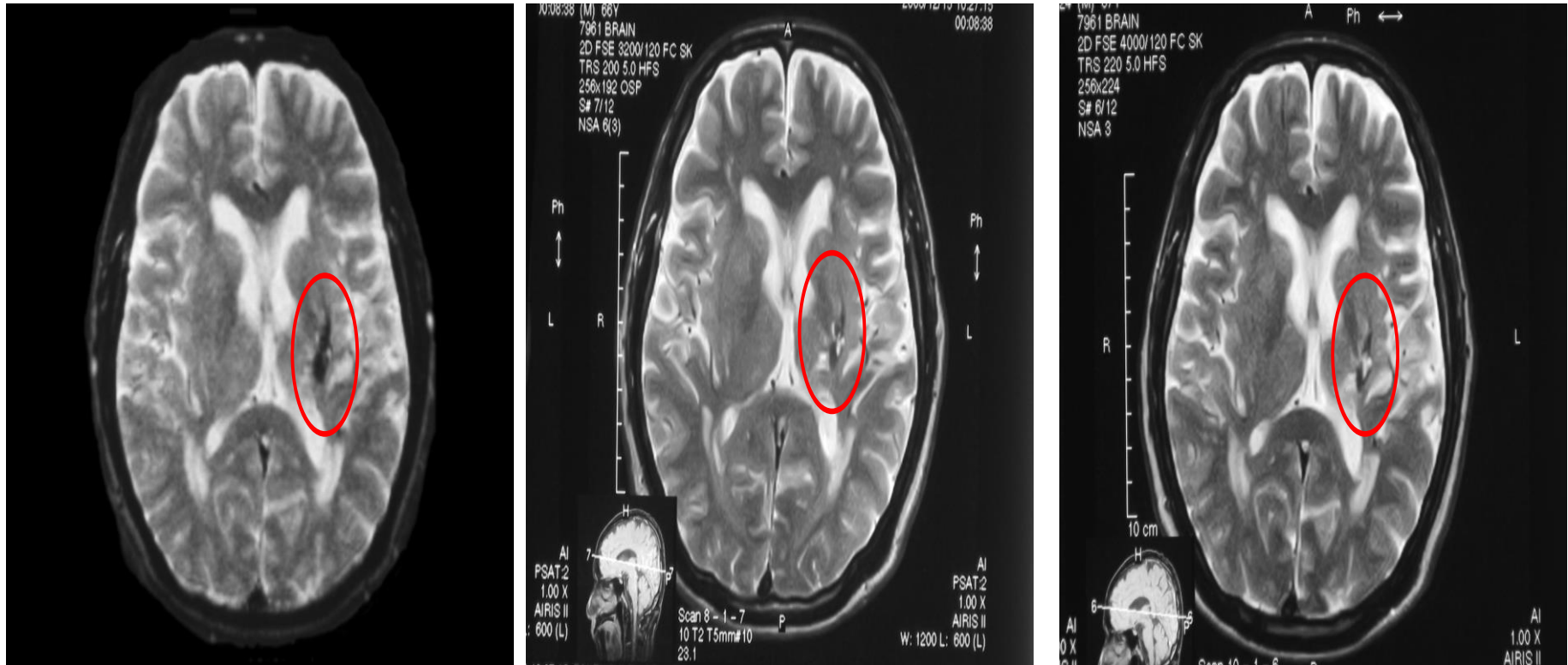
2 month



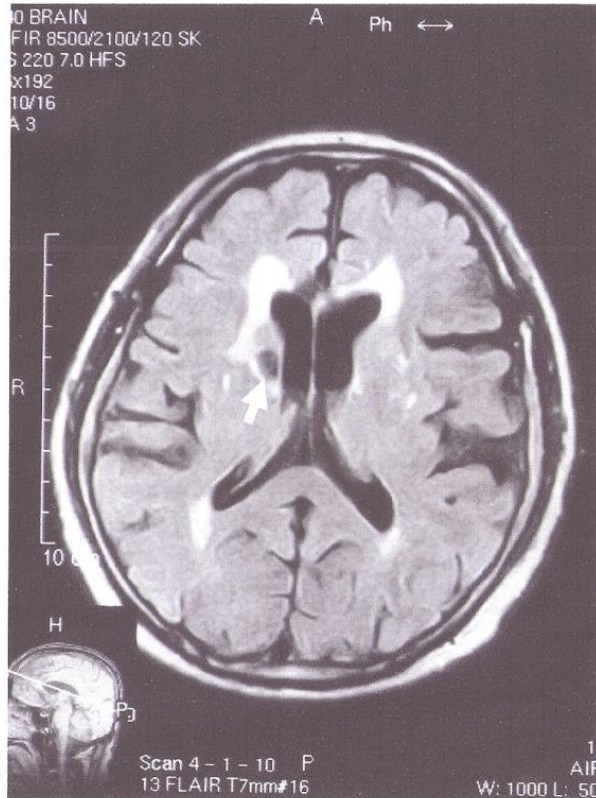
4 month



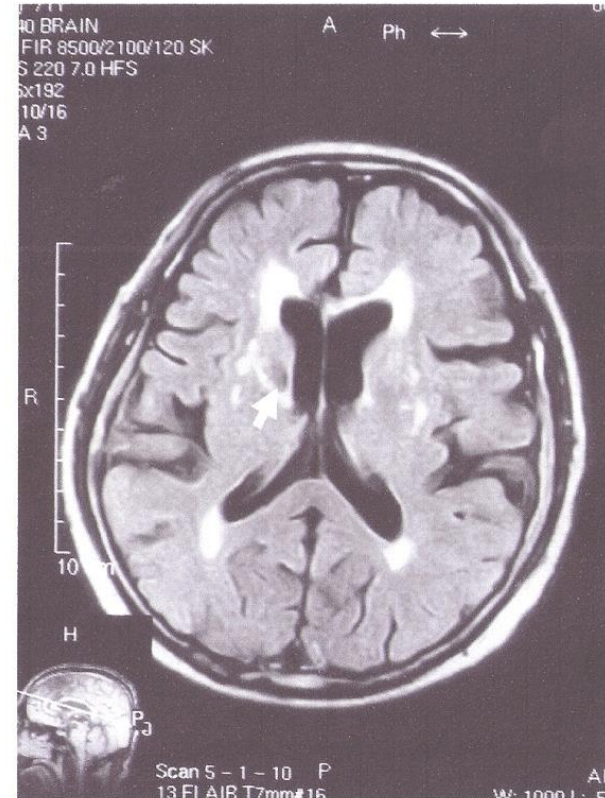
MRI Scan of Stroke Patient (Case 2)



MRI Scan of Stroke Patient (Case 3)



還元電子治療前
(矢印は病巣を示す)



還元電子治療8ヵ月後
(矢印は病巣を示す)